

Superior Acoustical Performance

SelectSound Black acoustic blanket provides excellent acoustical performance for walls in multiplex theaters, sound studios and performing arts centers. *SelectSound* Black acoustic blanket is also ideal for use above suspended metal ceiling systems. Depending on specified thickness, *SelectSound* Black acoustic blanket absorbs up to 100% of the sound striking its surface.

SelectSound Black acoustic blanket helps provide the highest quality audio reproduction by reducing sound reverberation within spaces. Sound transfer from space to space is also noticeably reduced.

Physical Property Data

Property	Test Method	Value
Water vapor sorption (by weight)	ASTM C 1104	<3% by weight at 120°F (49°C), 95% R.H.
Fungi resistance	ASTM C 1338	Meets requirement
Corrosiveness	ASTM C 665 Corrosiveness Test	Will not cause corrosion greater than that caused by sterile cotton on aluminum or steel*
Surface burning characteristics	UL723, ** or CAN/ULC-S102-M**	Flame spread 25** Smoke developed 50
Maximum Air Velocity	UL 181 Erosion Test	6,000 fpm (30.5 m/sec.)

* When wet, coated surfaces in contact with galvanized steel may cause discoloration of the sheet metal.

** The surface burning characteristics of these products have been determined in accordance with UL 723 and CAN/ULC-S102-M. These standards should be used to measure and describe the properties of materials, products or assemblies in response to heat and flame under controlled laboratory conditions and should not be used to describe or appraise the fire hazard or fire risk of materials, products or assemblies under actual fire conditions. However, results of this test may be used as elements of a fire risk assessment which takes into account all of the factors which are pertinent to an assessment of the fire hazard of a particular end use. Values are reported to the nearest 5 rating.

Durable Material Composition

SelectSound Black acoustic blanket is dimensionally stable and will not shrink or warp. The blanket's resilient composition resists job-site damage. Composed of inorganic glass fibers, *SelectSound* Black acoustic blanket will not rot or mildew and is noncorrosive to steel, copper and aluminum.

Fast, High Quality Installation

This wider product improves job site productivity and requires less seams. Lightweight and resilient, *SelectSound* Black acoustic blanket is easy to handle, fabricate and install. Both stick pins and adhesives can be used to secure insulation to drywall, concrete block or precast concrete.

Size Availability

SelectSound Black acoustic blanket is available in standard thicknesses of 1" and 2". A 1 1/2" thickness is available through special order.

The 1" and 1 1/2" product is available in 72" W x 70' L rolls, while the 2" product is available in a 72" W x 50' L roll.

All Black Wool with Black Mat Finish

SelectSound Black acoustic blanket is an all black wool product with a black mat surface. It is excellent for eliminating light reflections while providing superior acoustical performance.

Design Considerations

Acoustical performance of interior surfaces can generally be improved by increasing product thickness.

SelectSound Black acoustic blanket can be specified for use in conjunction with other Owens Corning acoustical material to provide additional performance.

Applicable Standards

SelectSound Black acoustic blanket complies with the property requirements of ASTM C 553, Type III, 250°F maximum use temperature.

The noise reduction coefficients of *SelectSound* Black acoustic blanket were derived from tests conducted in accordance with ASTM C 423 on a Type A mounting. Meets New York City MEA No.306-03-M.

Installation Procedure

SelectSound Black acoustic blanket can be installed on drywall, concrete block or precast concrete using impaling pins or appropriate adhesives.

When installing insulation with adhesive, follow adhesive manufacturer's recommendations for surface preparation and pattern.

When using impaling pins, follow the pin manufacturer's recommendations for surface preparation, location and amount of pins. Pin length should be selected to ensure tight fit. Where subject to physical contact, protect pin tips.

Keep product dry during shipping, storage and installation.

SelectSound® Black Acoustic Blanket

Acoustical Performance

Tested Values – SelectSound Black Acoustic Blanket

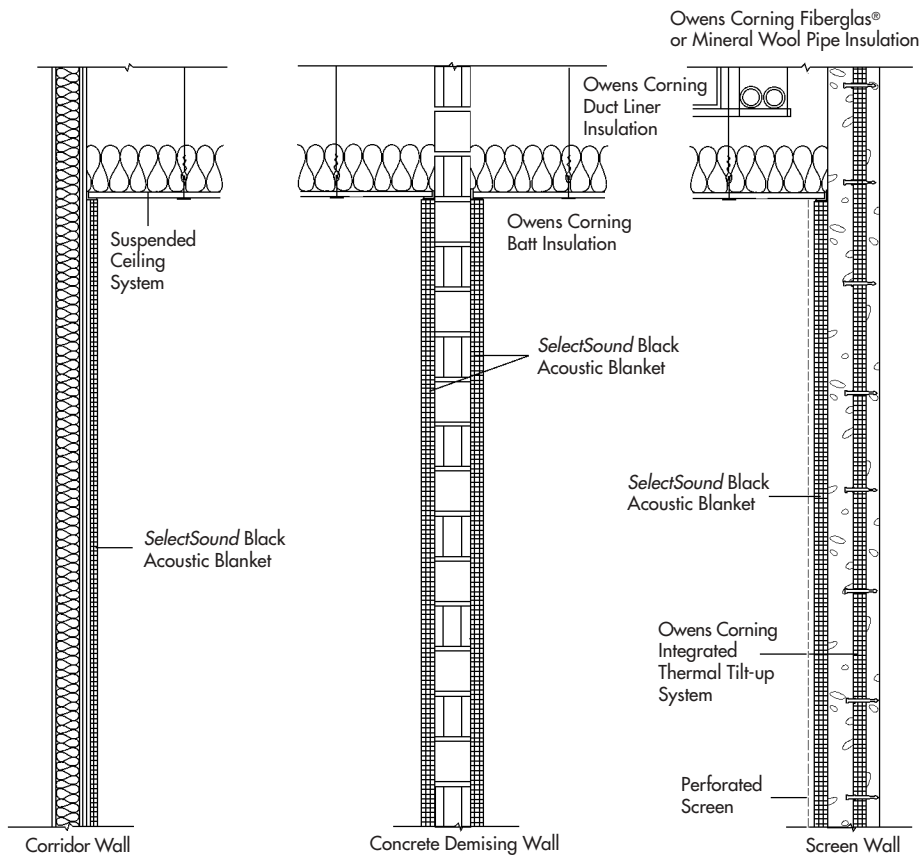
Sound Absorption Coefficients (ASTM C 423, Type “A” Mounting)

Product	Density		Thickness		Octave Band Center Frequencies, Hz						Thermal Resistance*	
	pcf	(kg/m ³)	in	(mm)	125	250	500	1000	2000	4000	NRC	R-Value (hr•ft ² •°F)/Btu
SelectSound Black	1.5	(24)	1.0	(25)	.10	.34	.64	.87	.91	.91	.70	4.2
Acoustic Blanket	1.5	(24)	1.5	(38)	.12	.62	1.07	1.10	1.01	0.95	0.95	6.3
	1.5	(24)	2.0	(51)	.27	.80	1.12	1.07	1.02	1.01	1.00	8.5

* ASTM C518

These data were collected using a limited sample size and are not absolute values. Reasonable tolerances must therefore be applied. All tests were conducted in accordance with ASTM C 423, Type A mounting (material placed against a solid backing such as a block wall). Owens Corning Granville Science & Technology Acoustics Lab is National Voluntary Laboratory Accreditation Program (NVLAP) approved.

Conceptual Details



For CSI type sample specification, please contact your local Owens Corning representative.



INNOVATIONS FOR LIVING™

OWENS CORNING WORLD HEADQUARTERS

ONE OWENS CORNING PARKWAY
TOLEDO, OHIO, USA 43659

1-800-GET-PINK

www.owenscorning.com

Owens Corning reserves the right to change this product as needed.

The GREENGUARD Indoor Air Quality Certified mark is a certification mark used under license through the GREENGUARD Environmental Institute.

Pub. No. 5-IN-44089-B Printed in U.S.A., April 2004 Copyright © 2004 Owens Corning