



**ANY JOB.
ANY SIZE.
ANY PLACE.**

60 Years of American Ingenuity

5200

Maximize your production with a **5200**. Designed for low maintenance and high production, while offering rugged performance. Capable of blowing all types and brands of loosefill insulation to the manufacturer's specifications. The **5200** is for the busy professional insulation contractor as a truck mounted machine with a 24.8 gross hp Kubota diesel engine. It can also be used in production facilities for manufactured housing.

- Adaptable fold down loading door
- Removable all steel airlock allows quick access for maintenance
- Durable powder coat finish
- Large hopper capacity for less reloading time & easy loading
- User friendly 12 VDC electric dashboard
- Positive Displacement Blower

MATERIAL PRODUCTION RATE MATERIAL

	5200 (2359)*
CELLULOSE	175 Bags per hr.*
	2300 (1043)*
FIBERGLASS	80 Bags per hr.*

* lbs/hr (kg/hr) rating with 150 ft. (45.8 m.) of 4" (10.2 cm.) hose at 15 ft. (4.8 m.) elevation.



Backed by a manufacturer's
2-YEAR WARRANTY - Made in the U.S.A.

Note:

Manufacturer's product brand, density and variable blowing conditions will affect production rate.

60 Years

KRENDL MACHINE COMPANY • 1201 SPENCERVILLE RD • DELPHOS, OHIO 45833 • 800.459.2069 • F 419.695.9301



1958-2018 krendlmachine.com



KRENDL

The Innovator in Insulation Equipment™

5200

Scan to learn more about Krendl Machine

• HOPPER CAPACITY •

70 cu. ft. (1.98 m³)

Loading made easy with built in adaptable tray

• WEIGHT/DIMENSIONS •

(Diesel)

2292 lbs / 52"W x 83"D x 83"H

1040 kg. / 132cm x 211cm x 211cm

(PTO)

1725lbs/ 52"W x 76"D x 83" H

783 kg. / 132cm x 193 cm x 211cm

(Electric)

1700 lbs / 43"W x 70"D x 83"H

771 kg. / 109cm x 178cm x 211cm

• BLOWER/SIZE •

Positive Displacement Blower

Blower System yields

250 CFM @ 6 PSI (Diesel & PTO)

220 CFM @ 5 PSI (Electric)

• AIRLOCK •

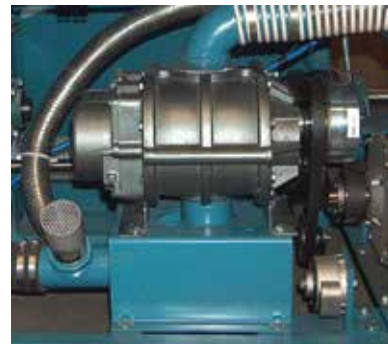
18" x 14" diameter

(45.7cm. x 35.5cm. diameter)

4" (10cm.) outlet



24.8 gross hp Kubota Diesel Engine *



Positive Displacement Blower

w/250 CFM @ 6 psi (Diesel & PTO)

w/220 CFM @ 5 psi (Electric)



Multiple Agitators

Designed for Constant Material Flow

* AVAILABLE- PTO, PTO W/GENERATOR, ELECTRIC