



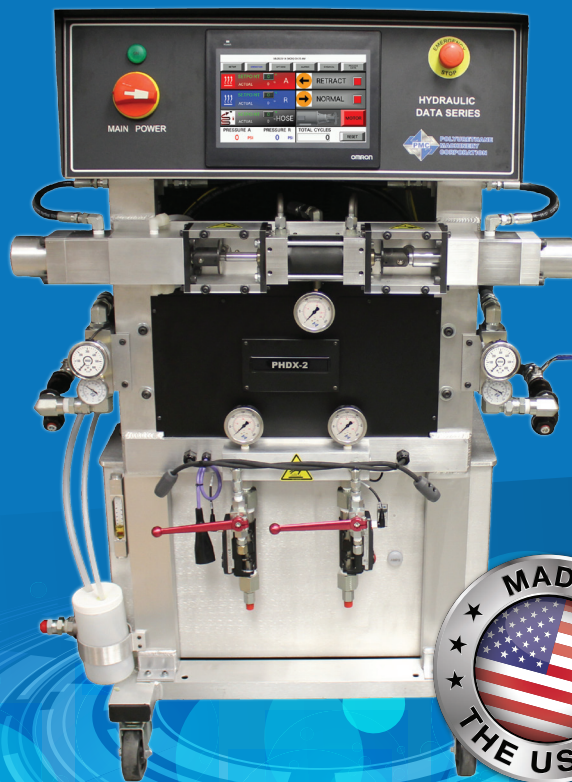
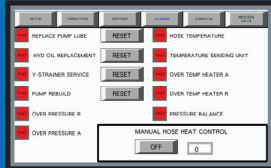
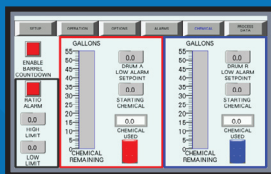
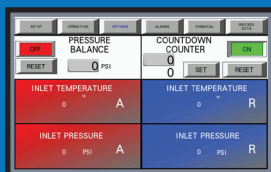
**POLYURETHANE
MACHINERY
CORPORATION**

Smart Machine PHD/PHDX-2 Series

Foam and Coatings Proportioners

The newest generation of PMC proportioners allows you to track, monitor, save data, troubleshoot and the unit will even alert you when routine maintenance is recommended.

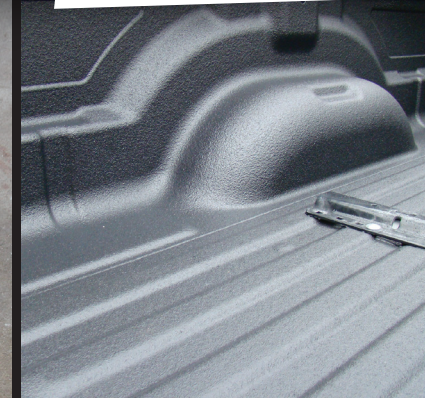
- Main touch screen allows navigation to all proportioner functions.
- Screen allows easy temperature and pressure adjustments and provides Pressure Balance Control and Auto Shut Down Counter.
- Monitor chemical usage and drum capacities.
- Troubleshooting alarms and maintenance alerts.



Polyurethane Machinery Corporation • Lakewood, NJ, USA • 732-415-4400

Innovative Spray Technology Made Simple

www.polymacusa.com



Technical Data: PHD/PHDX-2 Series

MODEL	PHD-2	PHDX-2
Output*	28 lbs/min (12.70 kg/min)	1.7 gal/min (6.43 liters/min)
Max. Working Pressure	2,000 psi (138 bar)	3,000 psi (206 bar)
Max. Hose Length	210 ft (64 m) w/70 Volt Trans 310 ft (94.5 m) w/90 Volt Trans 410 ft (121.9 m) w/120 Volt Trans	210 ft (64 m) w/70 Volt Trans 310 ft (94.5 m) w/90 Volt Trans 410 ft (121.9 m) w/120 Volt Trans
Heater Wattage	7,500 watts (single htr) 9,000 watts (single htr) 10,500 watts (single htr) 14,000 watts (single htr)	14,000 watts (single htr)
Hose Heating Power	70 V, 90 V or 120 V	70 V, 90 V or 120 V
Maximum Fluid Temperature	190 °F (87.7 °C)	190 °F (87.7 °C)
Weight (w/o Hydraulic Fluid)	415 lbs (188 kg)	415 lbs (188 kg)
Electrical @ 7.5KW Heaters	42 amps @ 3 x 230V 63 amps @ 1 x 230V	Not Applicable
Electrical @ 9KW Heaters	46 amps @ 3 x 230V 75 amps @ 1 x 230V	Not Applicable
Electrical @ 10.5KW Heaters	49 amps @ 3 x 230V 82 amps @ 1 x 230V	Not Applicable
Electrical @ 14KW Heaters	58 amps @ 3 x 230V 97 amps @ 1 x 230V	62 amps @ 3 x 230V 105 amps @ 1 x 230V

PHD/PHDX Series also available in 380 Voltage-Call for specs!

*Output measured with mineral oil

Standard Features

Opposed piston pumping is the industry benchmark and includes durable and easily serviceable ball checks.

Automatic ISO lubrication system.

Hose heat tap setting to match the length of hose being used.

Open clevis design.

Single heater.

Large main screen makes it easy-to navigate the control over the system settings showing temperature, pressure and material usage in real time.

Data is captured in an easy-to-read excel format.

Pressure balance screen for constant monitoring of material temperature, pressure and system operations to ensure the optimum material mix and eliminate off-ratio spraying.

Automatic shutdown with onscreen troubleshooting keeps material flowing with less downtime.

Chemical flow screen provides a visual of material flow and is constantly monitored.

The machine will shut down before the drums are empty.

Daily material usage reports are easy to access and read.

Optional flow meters available for most accurate measurement of material usage.

Can be configured in Spanish.

Optional Equipment

PMC Spray and Pour Guns
Recirculation Blocks

Material Transfer Pumps for 55 and 30 Gallon Drums
Calibration/Bleed Tool

Heated Hoses
Replaceable TSU Probe